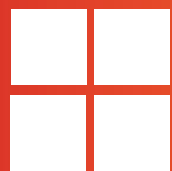


ECO Series **8CH**
4K NVR **POE NVR**

Application Manual



4K HD Output



9CH



H.264/H.264+
H.265/H.265+



Motion Detection



RJ45



USB



Playback



SATA

Video Input

9CH MAX. INPUT

1 x SATA

2 x USB

1 x RJ-45

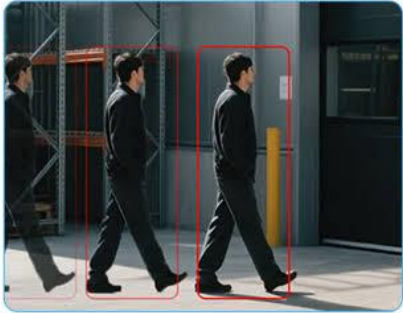
1 HD

Smart Event

Perimeter Protection

Loitering Detection / People Gathering Detection (Based on Human Detection)

Intrusion Detection / Line Crossing Detection / Enter Area / Leave Area (Based on Human and Vehicle Detection)



Loitering Detection



People Gathering Detection



Intrusion Detection



Line Crossing Detection



Enter Area



Leave Area



Intrusion Detection



Line Crossing Detection

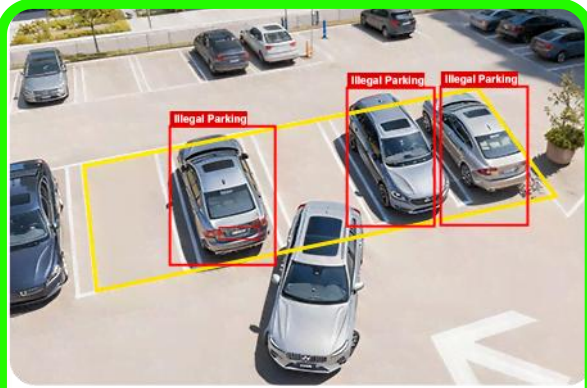


Enter Area



Leave Area

NEW AI Function



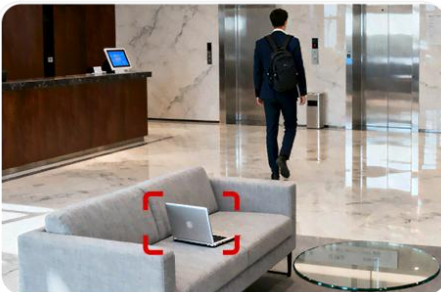
Illegal Parking
(based on vehicle shape and
License plates)



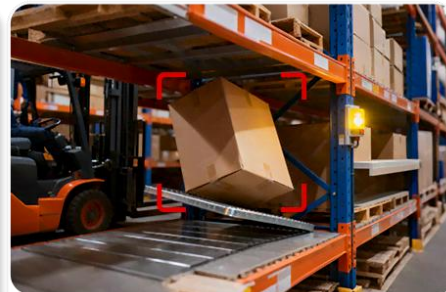
Line Crossing Count
(based on human shape&vehicle
detection)



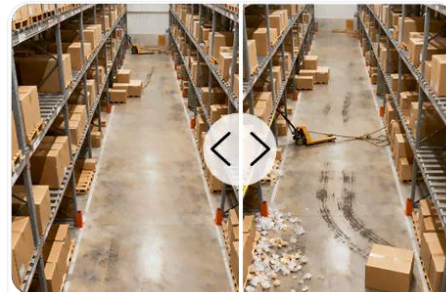
Sound Detection



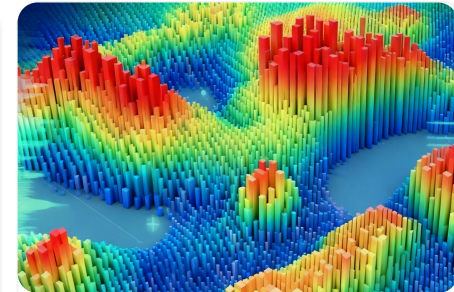
**Abandoned Object
Detection**



**Removed Object
Detection**



Scene Change

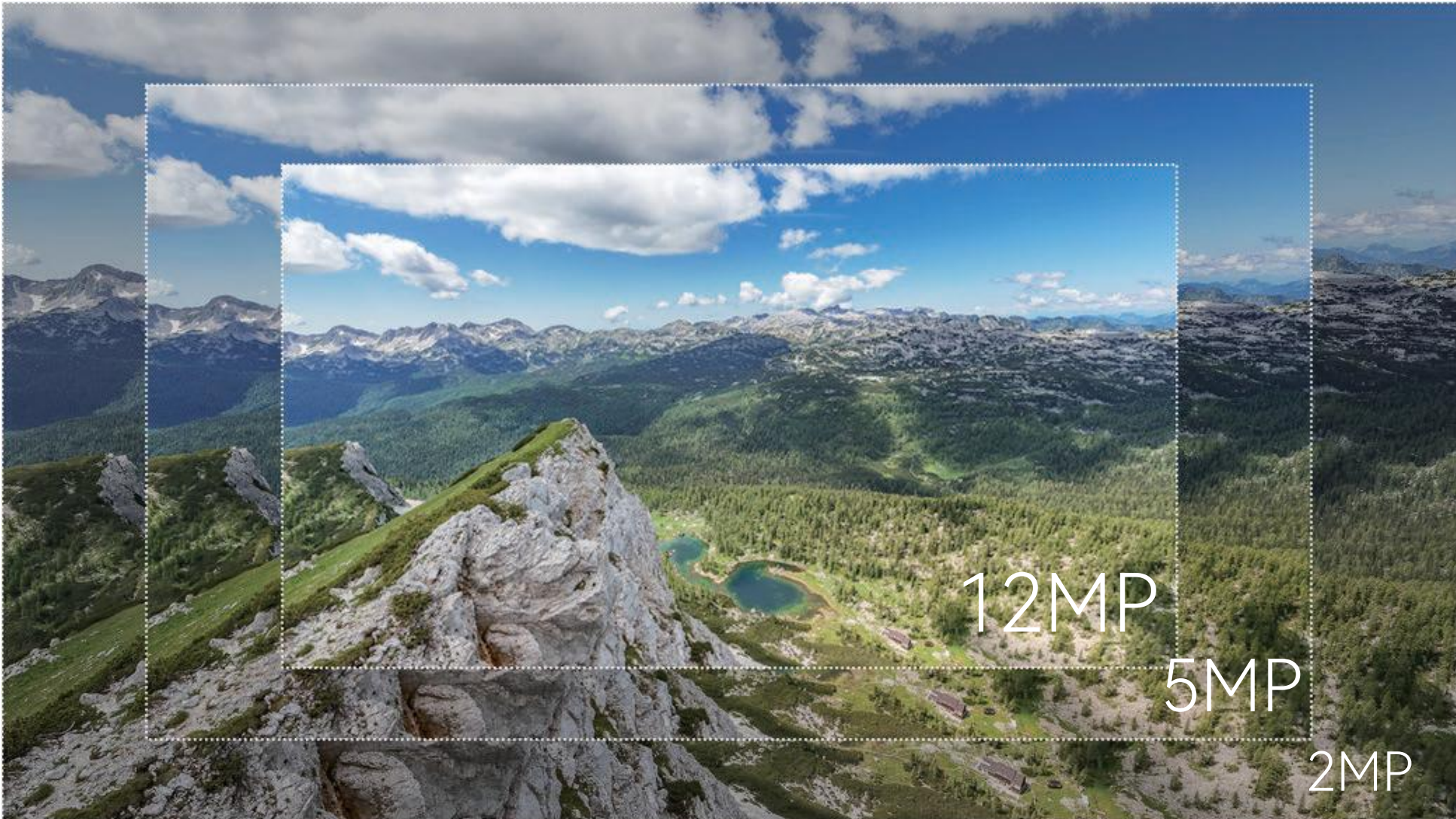


Heat Map

NVR 6.0

The image displays the NVR 6.0 user interface. In the foreground, a dark screen shows the text "NVR 6.0 INITIALIZATION" above a glowing, dark, square-shaped object. Behind it, the main interface is visible, featuring a top navigation bar with icons for play, camera, search, settings, and a menu. A sidebar on the left lists "System Config", "NetWork Config", and "Channel Manage". The main area shows a "Channel" dropdown set to "1" and an "Enable" toggle switch that is turned on. Below this, a grid of camera channels is shown, with several cells displaying "NO CAMERA". To the right, a timeline view shows a grid of colored bars (red, green, blue, yellow) representing video data. At the bottom right, there are buttons for "More Settings", "Copy Channel", and "Apply". The bottom status bar shows "16:53:28" and "2022/06/23".

Display Ultra HD Output



Storage

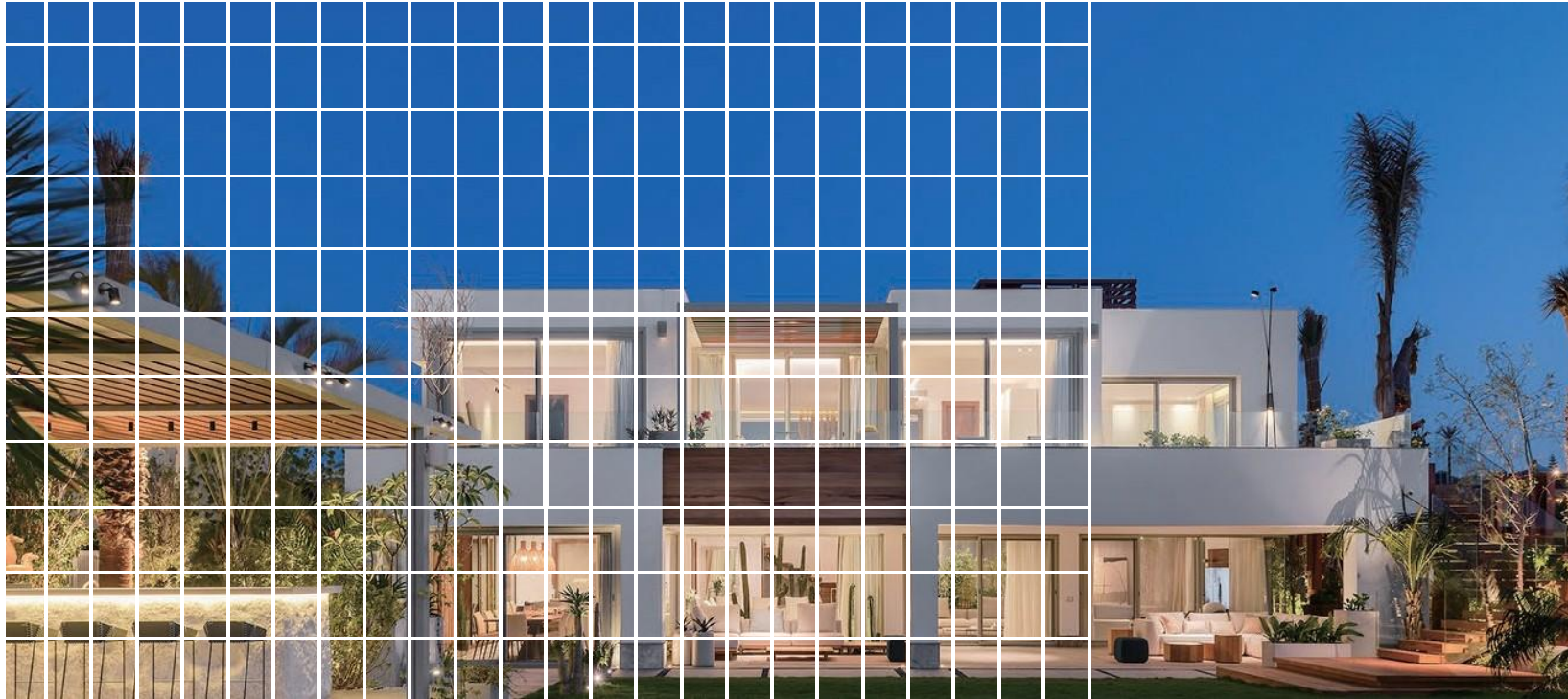


1*Max 8TB

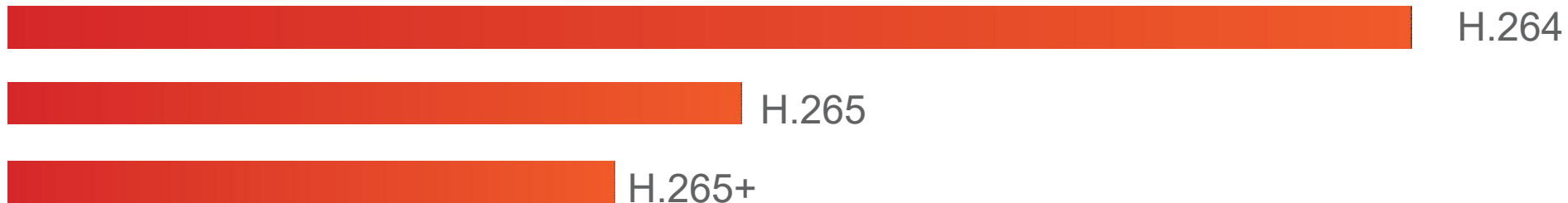
1 SATA Hard Disk Interface (3.5" SATA) Up to 8TB capacity

Video Compression

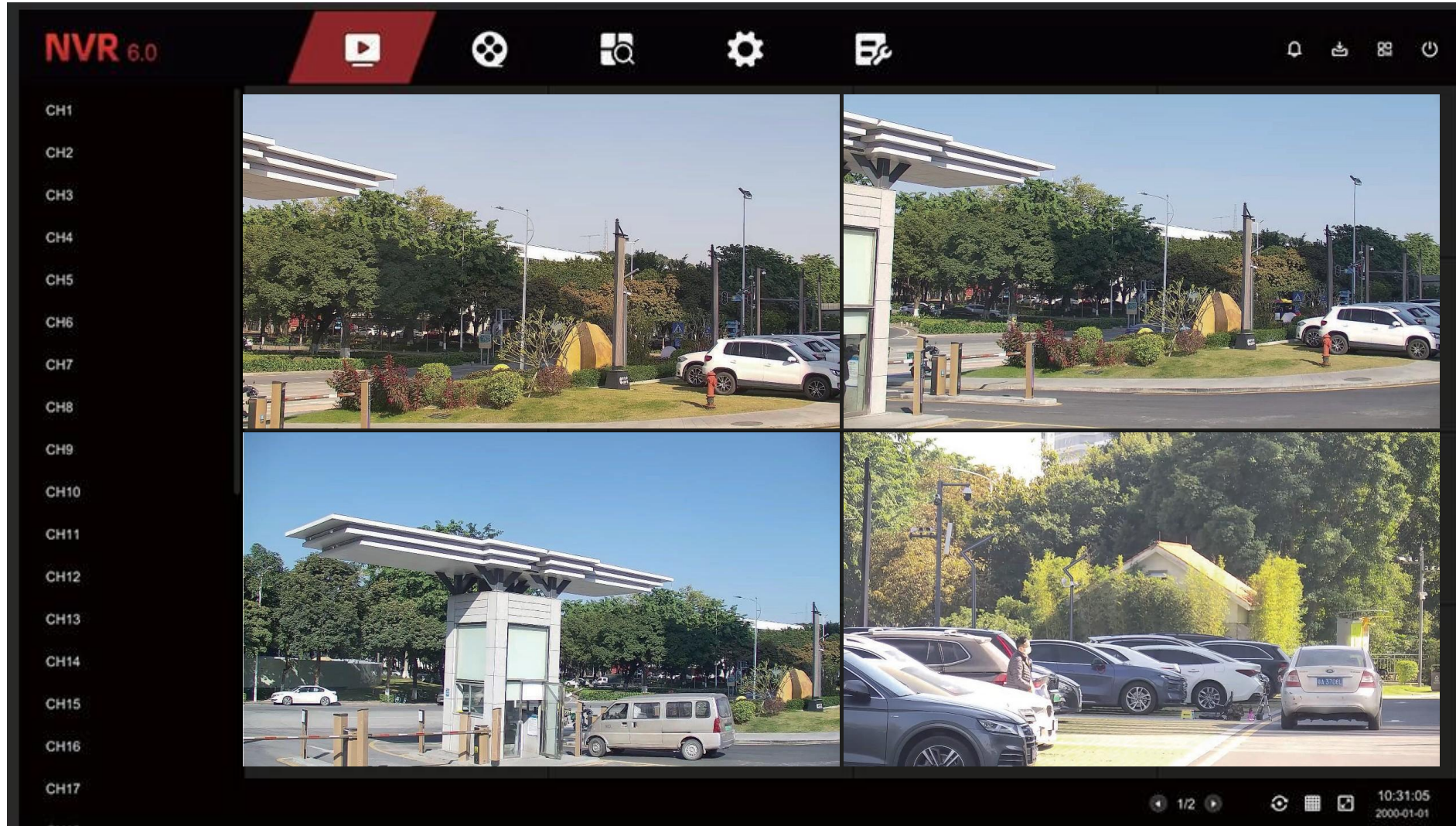
Faster loading and clearer picture quality



Storage space required for the same HDD

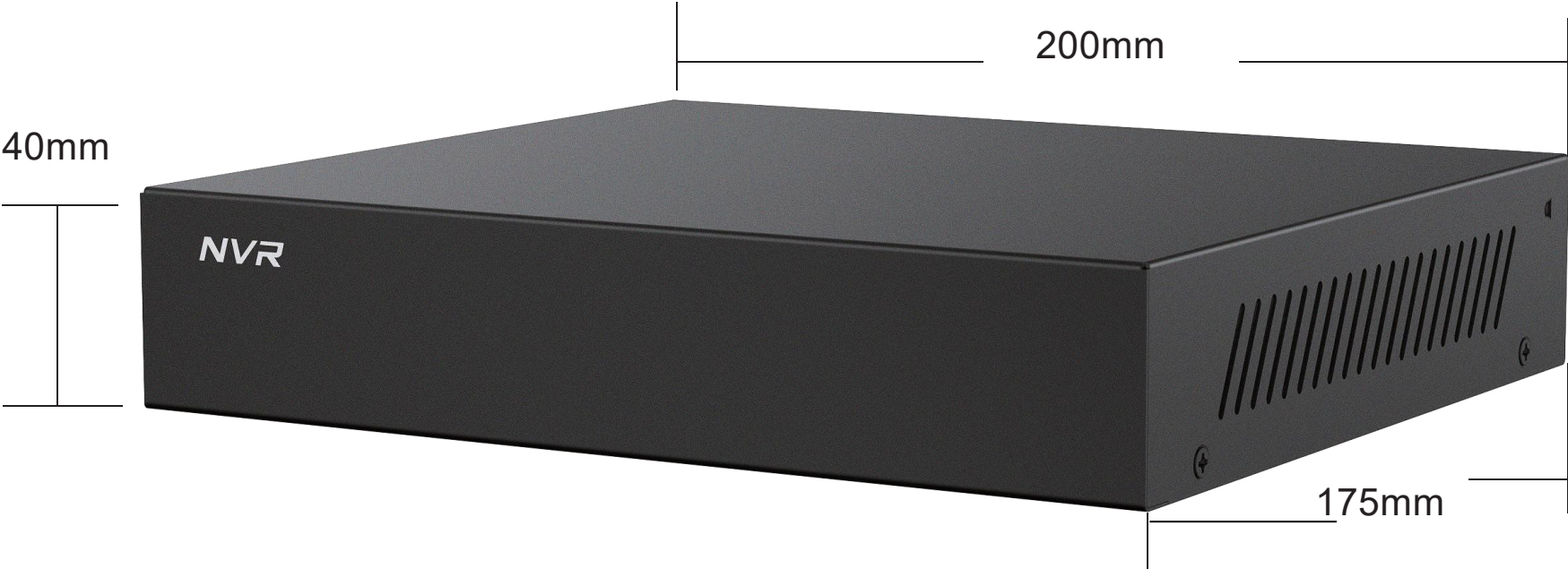


Playback



Decode Capability 4CH 1080P(1920x1080)@30fps

200mm x 175mm x 40mm / ≤ 1.0 Kg

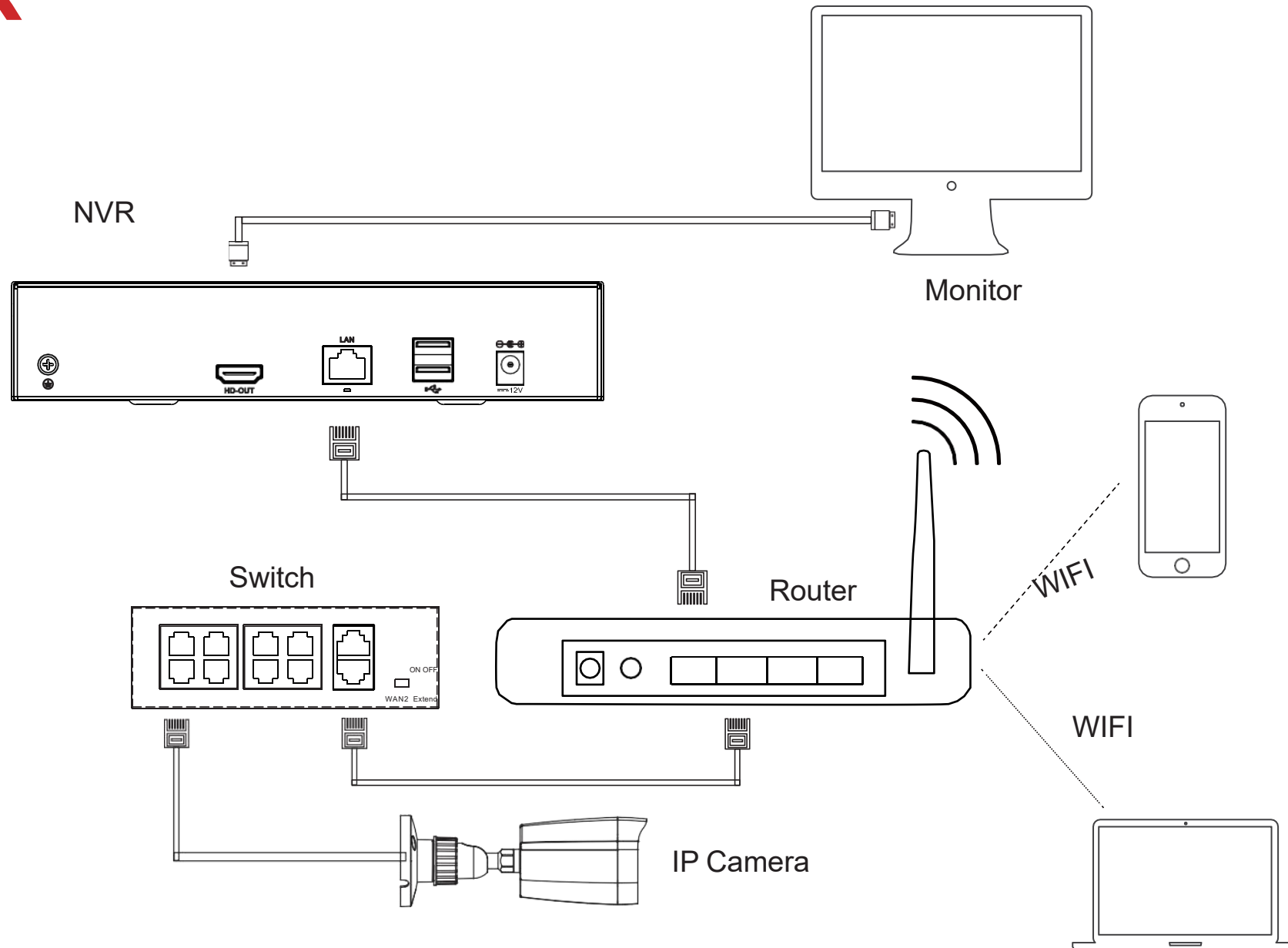


NVR3109S1

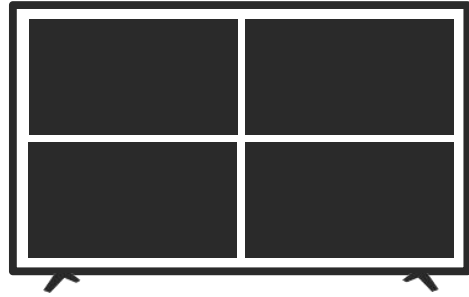


NVR3109S1P8

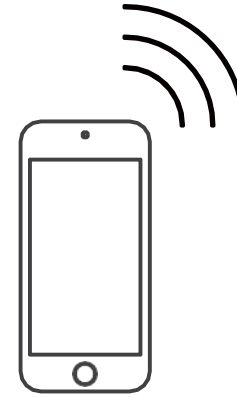
NVR



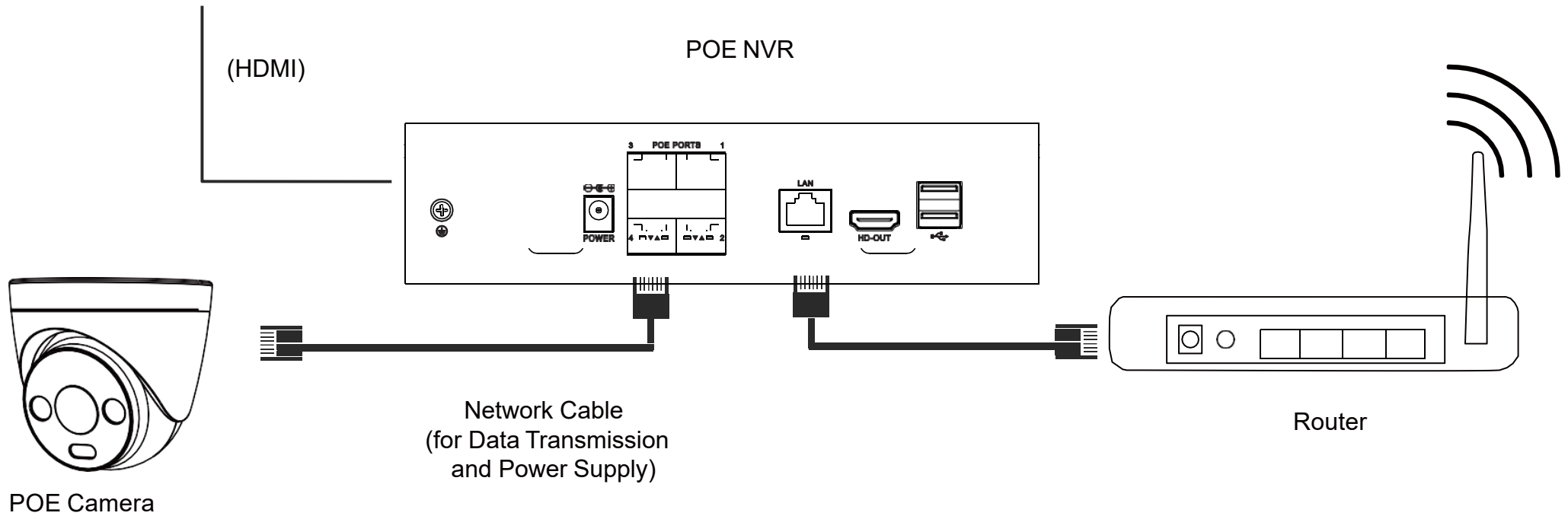
POE NVR



Local Monitoring



Remote Monitoring



Features

1 HD

Video Input: 9CH

Motion Detection: 9CH

Up to 8MP Resolution Recording

H265/H264/H265+/H264+

1 SATA HDD Up to 8TB capacity

PoE Interface: 8 RJ45 10M/100M

Incoming Bandwidth: 72Mbps

Outgoing Bandwidth: 48Mbps

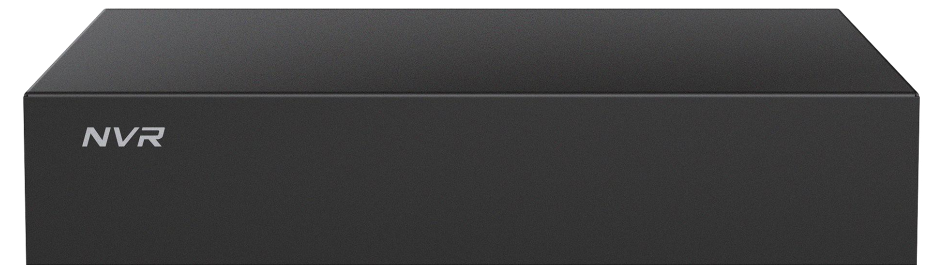
Power Input: DC48V/1.36A \leq 9.5W (Without Hard Disk)

8CH NVR

MODEL

NVR3109S1

NVR3109S18P



Application Scenarios

With cameras, it can be widely used in various places: Stations, Garages, Shopping malls, Schools, etc.



Social Media Platform



FACEBOOK



LINKEDIN



TIKTOK



TWITTER



WECHAT



YOUTUBE



WEBSITE

For more information about Longse
Please follow our social media platforms.